

NO. (UNLESS OTHERWISE SPECIFIED)

1 DC WIRING SHOWN ON DWG. 320-72001

2 SEE DWG #320-72003

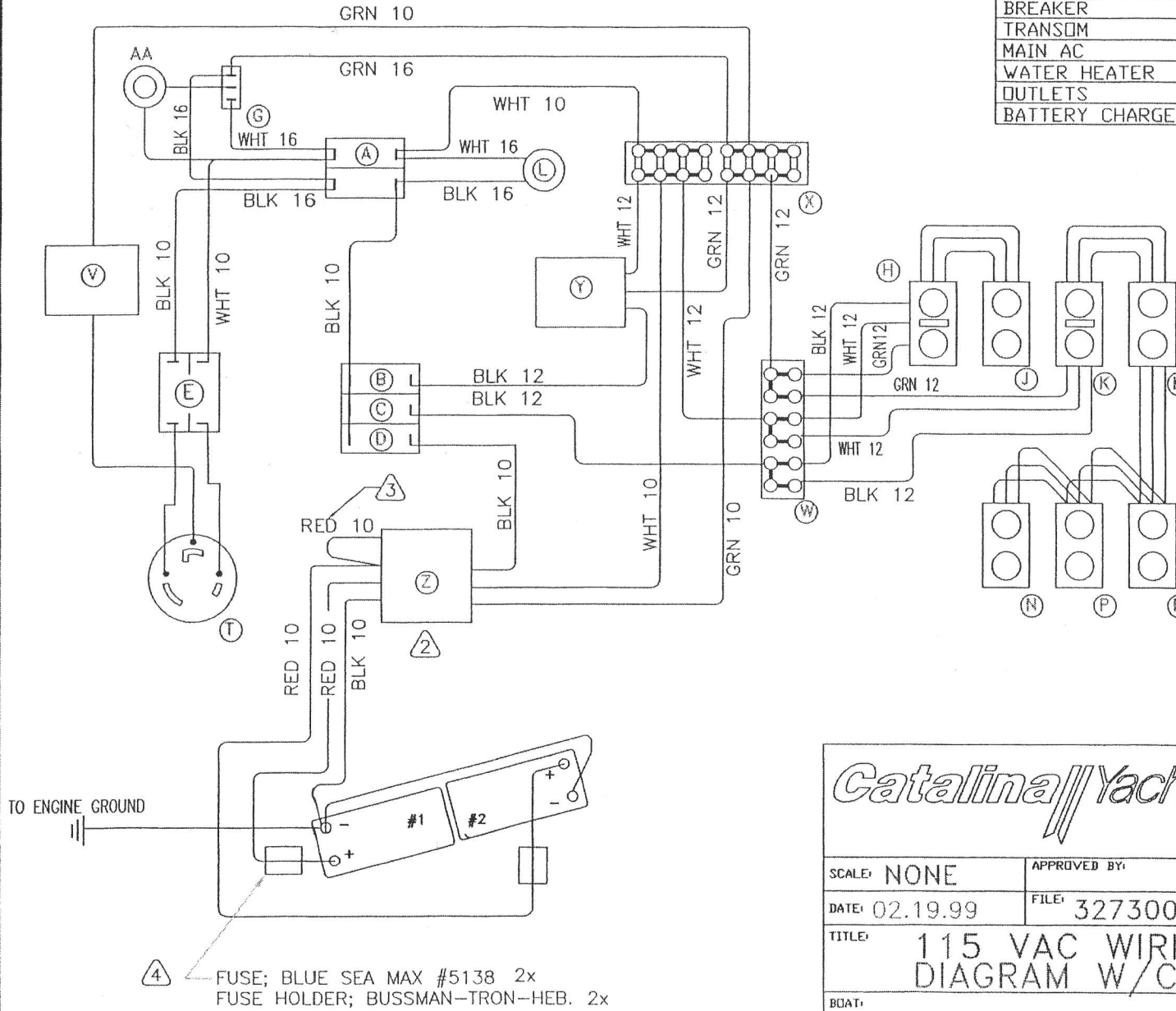
3 UNUSED POSITIVE TERMINALS MUST BE CONNECTED TO ACTIVE TERMINAL PER MANUFACTURER'S INSTRUCTIONS.

4 FUSE MUST MATCH CHARGER OUTPUT AND BE INSTALLED WITHIN 7" OF TERMINAL.

REV	DESCRIPTION	DATE	APPROVAL
	INITIAL RELEASE	3-26-93	GD
1	REVISED	12-17-94	GD
2	ADD GALVANIC ISOLATOR & BATT FUSE	02.19.99	

BREAKER SCHEDULE

BREAKER		AMP
TRANSOM	A	30
MAIN AC	B	30
WATER HEATER	C	20
OUTLETS	D	15
BATTERY CHARGER	E	10



CC	FUSE; BLUE SEA MAX #5138, 20A	
BB	FUSE HOLDER; BUSSMAN-TRON-HEB	
AA	LIGHT, LED, "REVERSED POLARITY", RED	
Z	CHARGER, BATTERY	
Y	HEATER, WATER, 6 GAL	
X	TERMINAL BLOCK, BREAKERS	
W	TERMINAL BLOCK, OUTLETS	
V	ISOLATOR, GALVANIC	GRN 10
T	INLET, SHORE PWR	
R	OUTLET, SALOON	GRN 12
P	OUTLET, HEAD	WHT 12
N	OUTLET, AFT STRM	BLK 12
M	OUTLET, FWD STRM	
L	LIGHT, LED, "AC ON", GREEN	
K	OUTLET, NAV STA, GFCI	GRN 12
J	OUTLET, GALLEY	WHT 12
H	OUTLET, GALLEY CABINET, GFCI	BLK 12
G	SWITCH, TEST	
F	HEATER, WATER	
E	CIRCUIT BREAKER, TRANSOM, 30A	
D	CIRCUIT BRKR, CHARGER 15A	BLK 10
C	CIRCUIT BRKR, WATER HTR 15A	BLK 12
B	CIRCUIT BRKR, OUTLETS 15A	BLK 12
A	CIRCUIT BRKR, MAIN AC 30A	
ITEM	DESCRIPTION	LEAD WIRE AWG

PARTS LIST

Catalina Yachts

21200 VICTORY BLVD.
WOODLAND HILLS, CA.
91367-(818)884-7700

SCALE: NONE	APPROVED BY:	DRAWN BY: Dennison
DATE: 02.19.99	FILE: 32730022	
TITLE: 115 VAC WIRING DIAGRAM W/CHARGER		SIZE: C
BOAT: CATALINA 320		SHEET: 1/1
		DRAWING NUMBER: 320-73002-2